



## CW-9510 and CW-10273 Air Vent Instructions

### Installing the Air Vent

1. Follow the appropriate instructions below based upon the type of support being used.
  - a. For Rail Supports: Loosen the aluminum rail connector nearest the desired location for the air vent. Slide the two (2) rails apart just enough to get the mounting bracket onto the rail. Slide the rails back together and retighten the rail connector. Do not tighten the mounting bracket at this time. **NOTE:** Use the top hole in the bracket for rail support.
  - b. For Pipe Support: Pull the pipes apart at a connection nearest the desired location for the air vent. Install the mounting bracket onto the pipe and slide the pipes back together. Do not tighten the mounting bracket at this time. **NOTE:** Use the bottom hole in the bracket for pipe support.
2. Install the air vent the same as instructed for the water pipe. See PNEG-670 for details. Ensure notches are lined up with the guides in the couplers.
3. Align the mounting bracket with the holes in the air vent and tighten together.
4. Tighten down the mounting bracket to the support rail/pipe.

**IMPORTANT:** Install an air vent assembly every 100 feet of water line to help prevent air locks in the system.

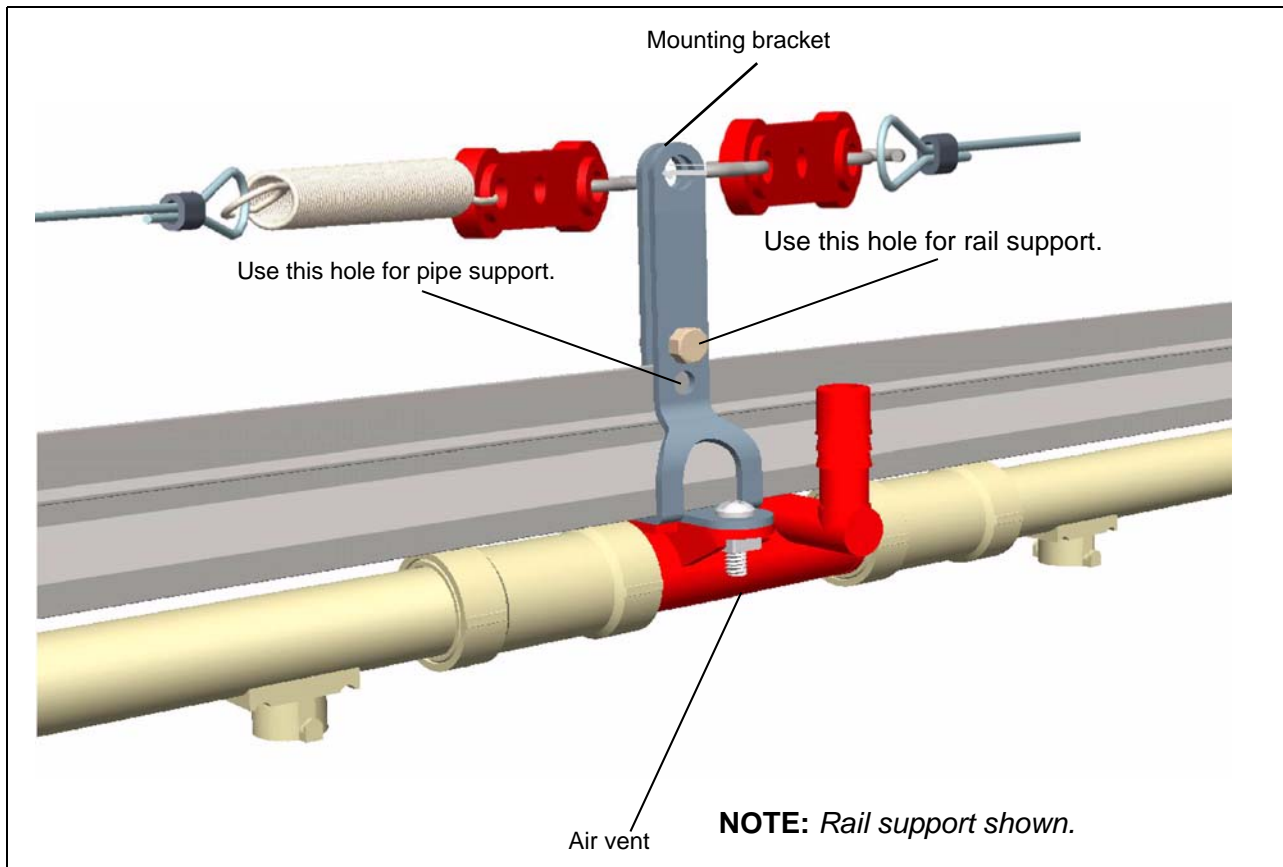


Figure 1



### Air Vent Assembly (CW-9510)

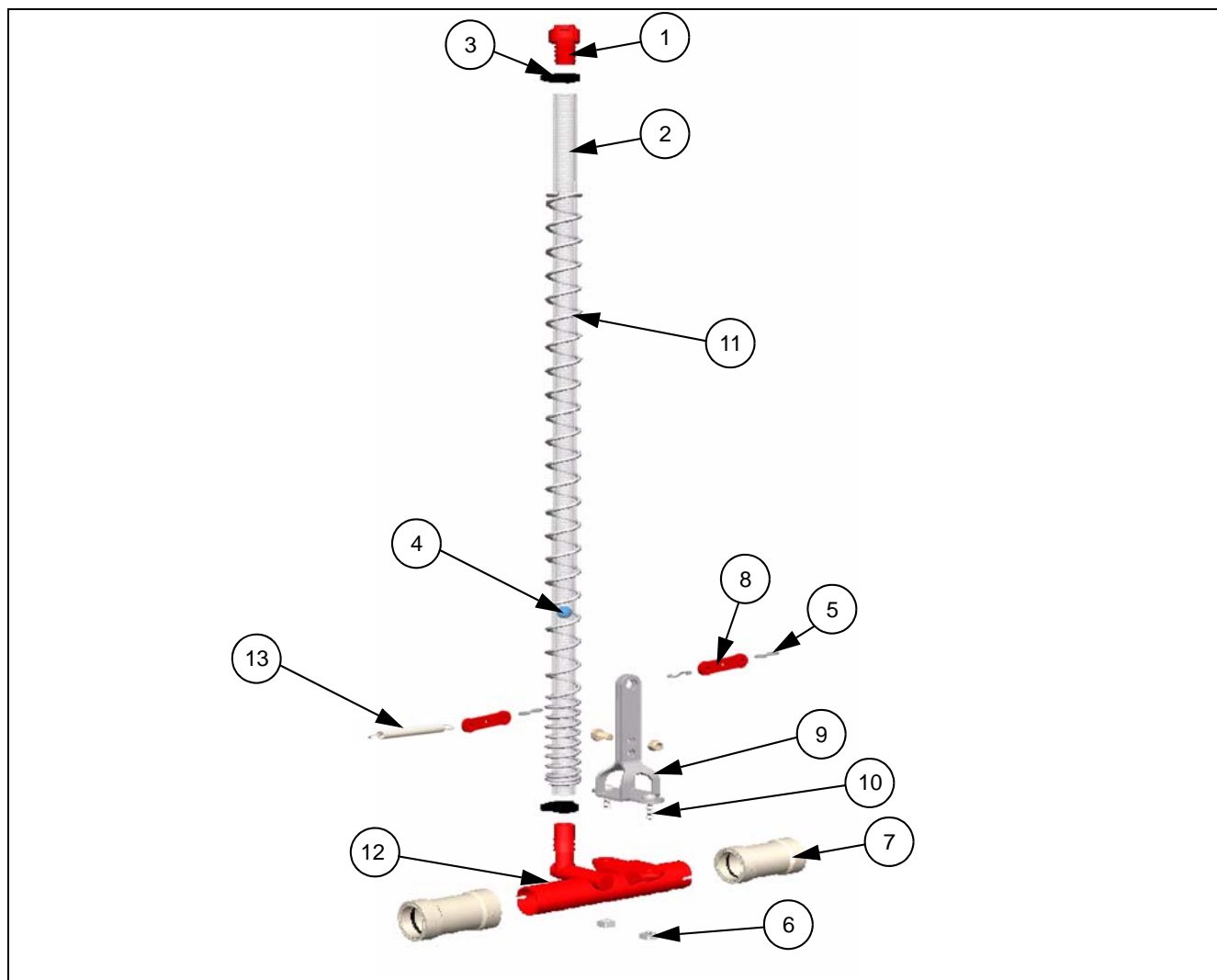


Figure 2

#### Air Vent Assembly (CW-9510) Parts List

Ref #	Part #	Description	Qty
1	CW-10050	Flush Cap Assembly	1
2	CW-9051	Flex Gauge Tube	1
3	CW-9600	Hose Clamp - 3/4" to 7/8" Black Nylon	2
4	CW-5154	Ball, 7/16" Plastic Float	1
5	S-9244	S-Hook, #1 0.080" x 1-1/16"	3
6	S-8910	Square Nut 1/4"- 20 Plated	3
7	CW-5020	Connector Assembly	2
8	CW-2003	Cord Adjuster	2
9	CW-3019	Water Line Mount Bracket	1
10	S-8789	Screw, MS 1/4"- 20 x 3/4" RHP ZN	3
11	CW-9052	Spring, 22" Sight Gauge	1
12	CW-10055	Air Vent Assembly	1
13	CW-5031	Spring, Stainless Steel, 3" OAL x 0.418" OD 40 Full Coils	1

Air Vent Assembly (CW-10273)

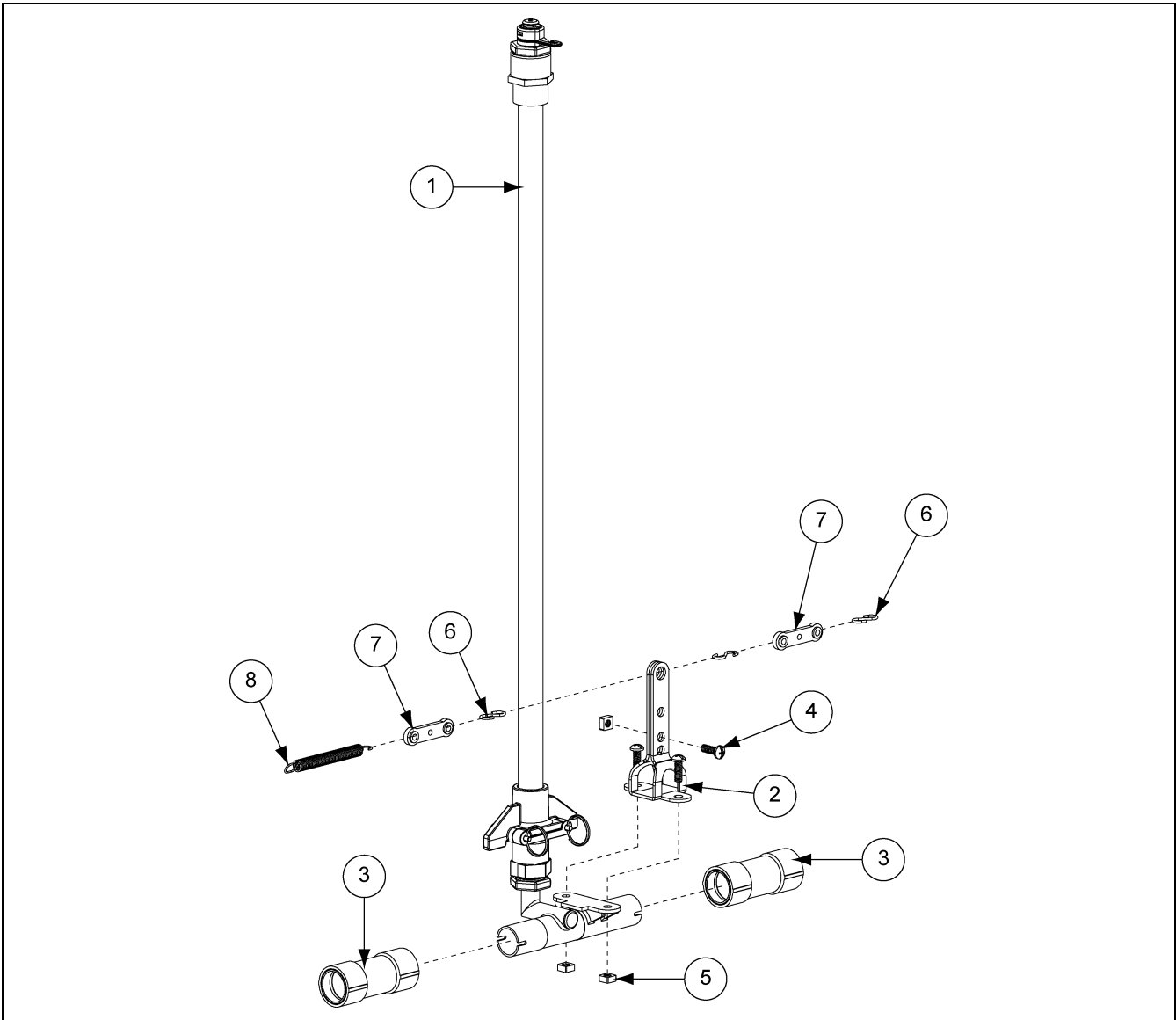


Figure 3

Air Vent Assembly (CW-10273) Parts List

Ref #	Part #	Description	Qty
1	CW-10273A	Vent Kit Assembly, Rigid Sight Tube Assembly	1
2	CW-3019	Water Line Mount Bracket	1
3	CW-5020	Connector Assembly	2
4	S-8789	Screw, MS 1/4"-20 x 3/4" RHP ZN	3
5	S-8910	Square Nut 1/4"-20 Plated	3
6	S-9244	S-Hook #1 0.080" x 1-1/16"	3
7	CW-2003	Cord Adjuster	2
8	CW-5031	Spring, Stainless Steel, 3" OAL x 0.418" OD 40 Full Coils	1